



106 Carroll Crescent Plumpton NSW

4  2  2 

Team We4U welcome you to this well presented street facing townhouse located in one of Plumpton's most sought after location. The simple, spacious and easy flowing layout with modern and quality fixtures of this north facing townhouse offers a convenient family living yet offering an easy care and maintenance free lifestyle.

Type : Townhouse
Price : \$ 801,000
View : <https://www.we4uestateagents.com.au/sale/nsw/western-sydney/plumpton/residential/townhouse/8137473>

Nestled in amazing neighbourhood, this property is perfect for a buyer entering the property market, down sizer or astute investor.

Key Features:

- Formal Living & Dining
- Generous size master bedroom with built ins & en-suite

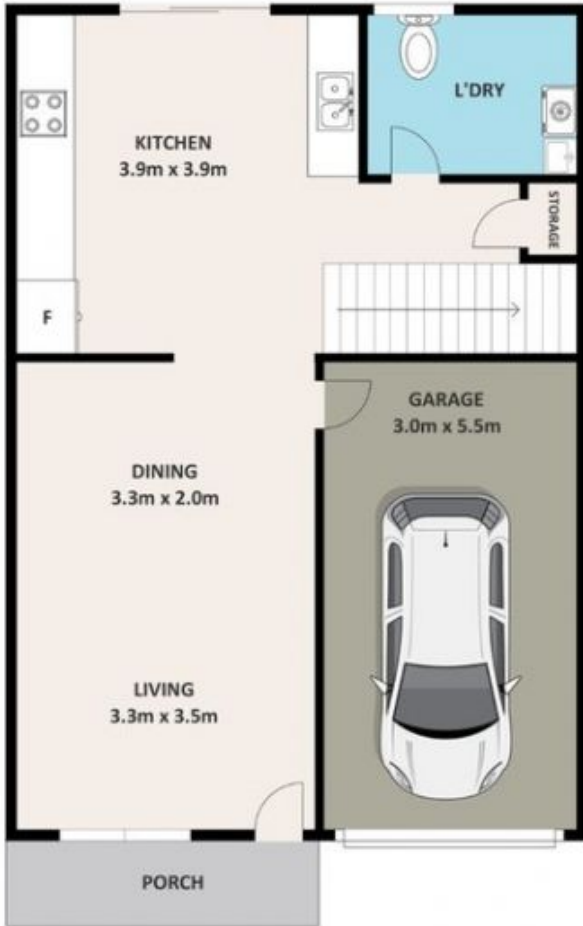
[For full version visit the website](https://www.we4uestateagents.com.au)



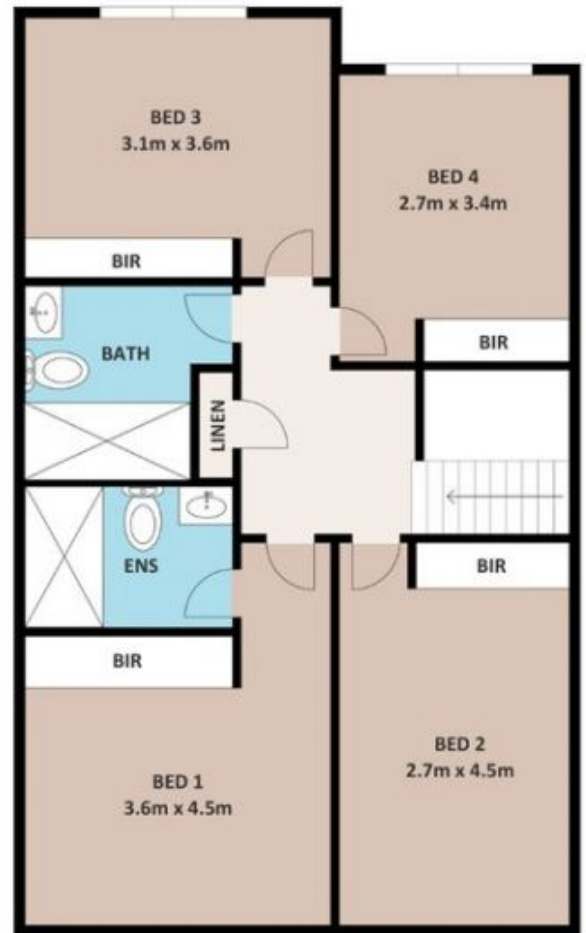
Barinder Singh
02 9676 6808



Tanveer Singh
02 9676 6808



GROUND FLOOR



FIRST FLOOR



106 CARROLL CRES, PLUMPTON

DISCLAIMER
 THE PLANS SHOWN ARE FOR MARKETING PURPOSES ONLY. ALL DIMENSIONS ARE APPROXIMATE AND NOT TO SCALE. THEY ARE SUBJECT TO ERRORS AND INACCURACIES AND NO LIABILITY WILL BE ACCEPTED. INTERESTED PARTIES SHOULD MAKE THEIR OWN ENQUIRIES.

