



235 Abell Road Marsden Park NSW

2  2  1 

Team WE4U proudly presents this 2 years old north facing and thoughtfully finished two storey family residence to the market. The simple, spacious and easy flowing layout with modern and quality fixtures and fittings, ensure your level of comfort is at a premium. You will be surprised with the benefits of this convenient location has to offer.

Features:

- Formal lounge
- Master bedroom with built ins, en-suite, ceiling fan, split a/c & access to balcony
- Another bedroom with built ins and ceiling fan
- Modern kitchen equipped with stone bench top, gas cook top & ample storage
- Open plan living and dining area seamlessly leading to

Price : \$ 755,000

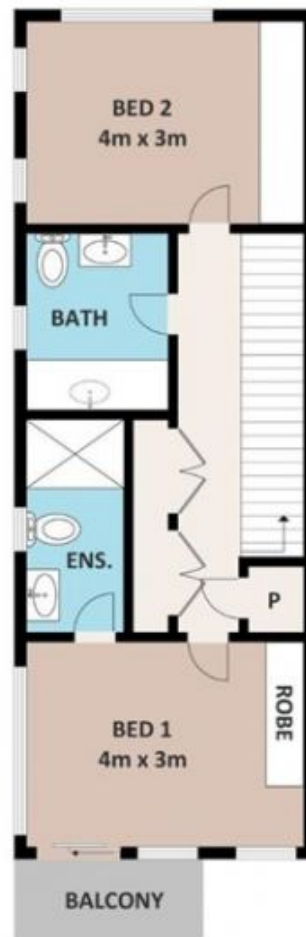
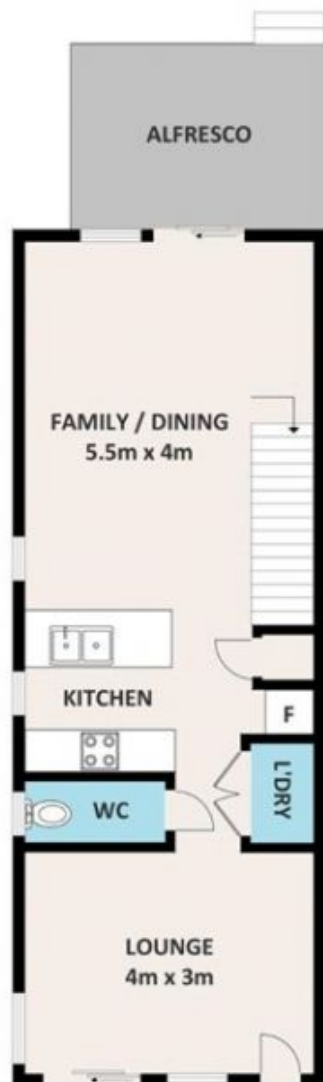
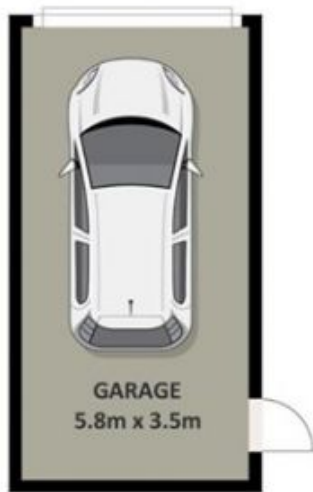
View : <https://www.we4uestateagents.com.au/sale/nsw/western-sydney/marsden-park/residential/townhouse/7933968>



Harpreet Kaur
02 9676 6808



Barinder Singh
02 9676 6808



235 ABELL ROAD, MARSDEN PARK

DISCLAIMER

THE PLANS SHOWN ARE FOR MARKETING PURPOSES ONLY. ALL DIMENSIONS ARE APPROXIMATE AND NOT TO SCALE. THEY ARE SUBJECT TO ERRORS AND INACCURACIES AND NO LIABILITY WILL BE ACCEPTED. INTERESTED PARTIES SHOULD MAKE THEIR OWN ENQUIRIES.

